

# Vista





www.vertiglass.com.tr

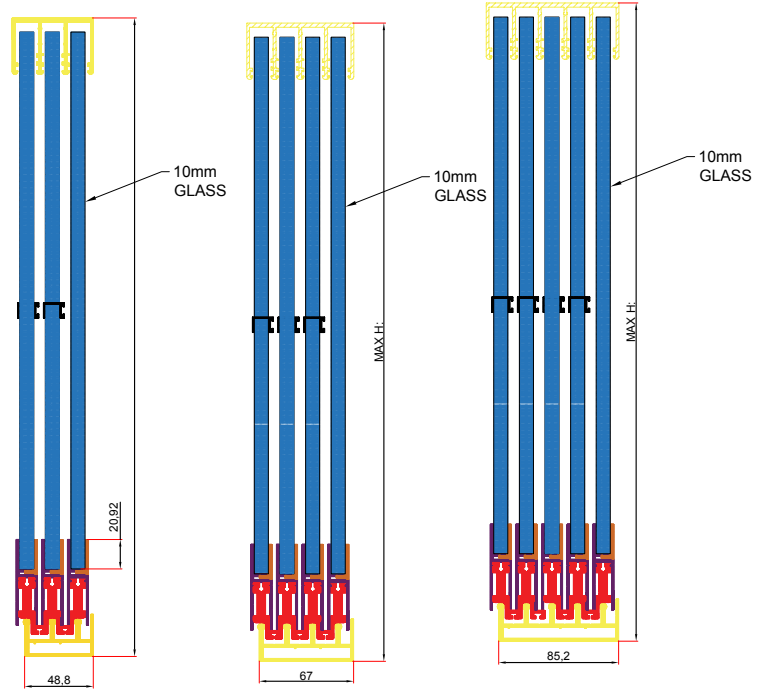
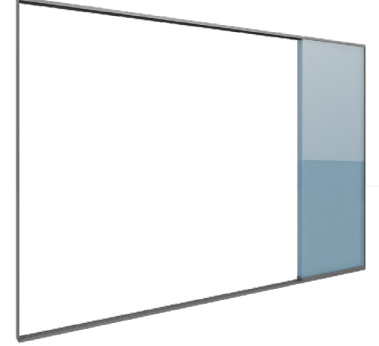
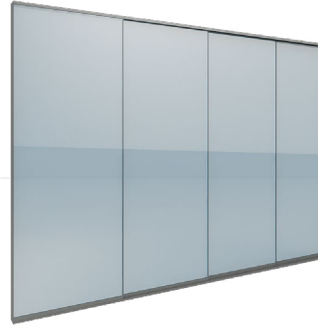
# Vista

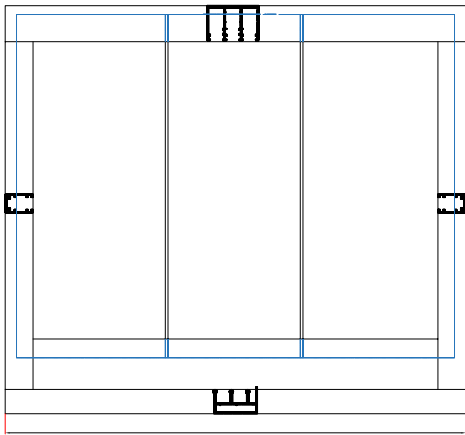
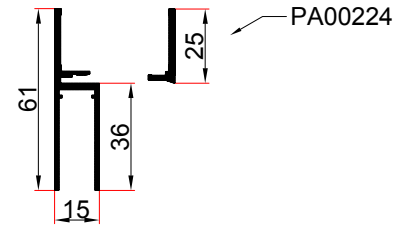
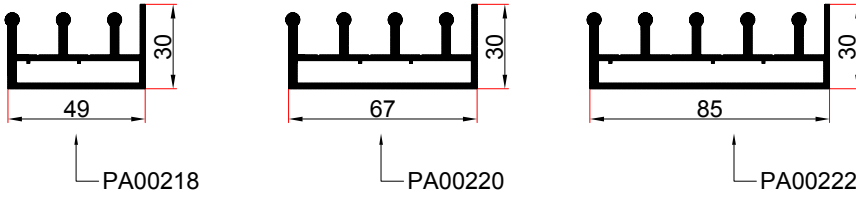
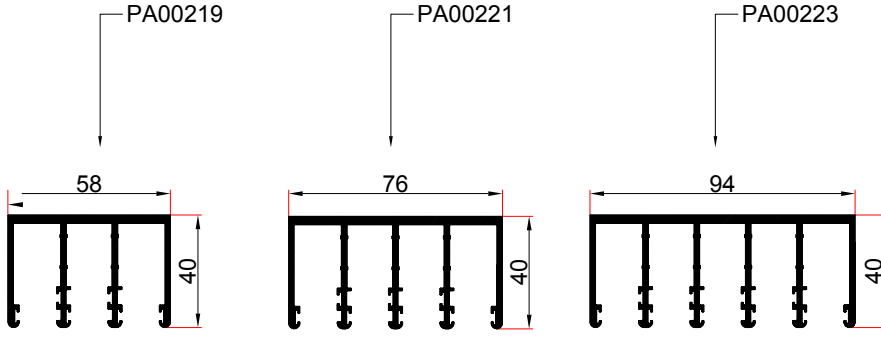
Technical Data / Teknik Veri

Dimensions in mm Boyutlar mm

Vista consists of blades that move in a sliding manner in the horizontal direction. It is produced according to the length of the system, according to the details of 3, 4 and 5 rails. 10mm tempered glass is used in the system. The water that may occur in the system as a result of rain and condensation is discharged out of the drainage channels integrated in the lower rail of the system. Since there are no aluminum profiles and insulation wicks in the vertical direction between the wings, its insulation is lower than standard systems. In each wing of the system, two high-quality, single-bearing and height-adjustable wheel sets are used so that the wing can operate quietly and comfortably.

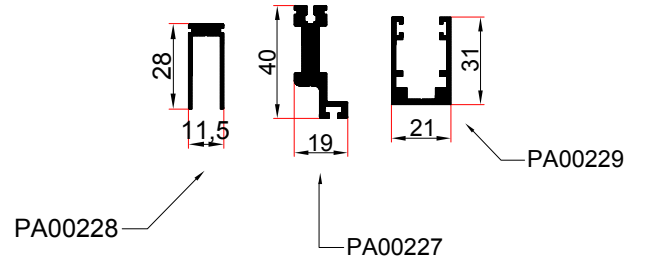
Vista, yatay doğrultuda kayar şekilde hareket eden kanatlardan oluşmaktadır. Sistem uzunluğuna göre 3'lü, 4'lü ve 5'li ray detaylarına göre üretilmektedir. Sistemde 10mm temperli cam kullanılmaktadır. Sistemde yağmur ve yoğunlaşma sonucu oluşabilecek su, sistemin alt rayına entegre edilmiş drenaj kanallarından dışarı tahliye edilir. Kanatlar arası dikey doğrultuda alüminyum profilleri ve yalıtım fitilleri olmadığından yalıtımı standart sistemlere göre alt seviyededir. Sistemin her kanadında, kanadın sessiz ve rahat çalışabilmesi için yüksek kalitede üretilen tek rulmanlı ve yükseklik ayarı yapılabilen 2 adet teker takımı kullanılmaktadır.





512

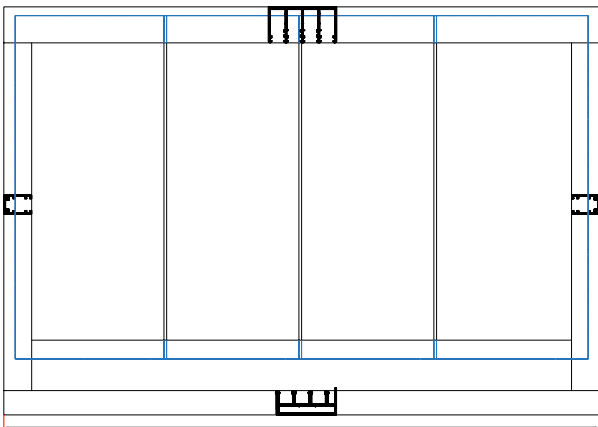
PA00225



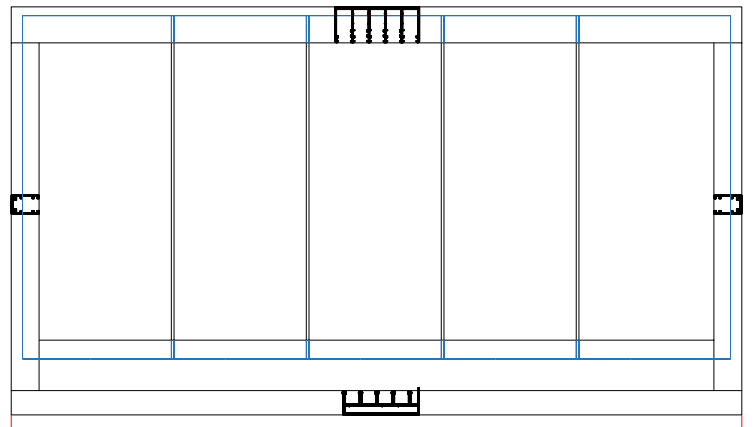
PA00228

PA00227

PA00229



Max W:



Max W: